

HADZI



3.53
1

DIMITRI HADZI

APRIL 4 - 29, 1972

RICHARD GRAY GALLERY

620 North Michigan Avenue Chicago 60611



Pillars of Hercules, 1971-1972



Hephaestus, 1971-1972



Talos, 1971-1972



Aeolus, 1971-1972

Catalog

- | | |
|--|--|
| 1 Terra III
1964-1967 height 49" bronze | 14 Thera I
1964-1965 height 19" bronze |
| 2 Samurai I
1967-1971 height 10" bronze | 15 Thera II
1967-1968 height 52" bronze |
| 3 Samurai II
1971 height 33 $\frac{1}{2}$ " bronze | 16 Gaea
1964-1971 height 15 $\frac{1}{2}$ " bronze |
| 4 Castor I
1963-1970 height 14 $\frac{3}{16}$ " bronze | 17 Arcturus
1971 height 12 $\frac{1}{2}$ " bronze
(model for Federal Reserve
Bank commission, Minneapolis) |
| 5 Pollux I
1963-1970 height 13" bronze | 18 Gemini
1971-1972 length 18 $\frac{1}{2}$ " bronze |
| 6 Castor II
1963-1971 height 32 $\frac{1}{4}$ " bronze | 19 Hephaestus
1971-1972 height 17 $\frac{1}{2}$ " bronze |
| 7 Pollux II
1963-1971 height 33" bronze | 20 Talos
1971-1972 height 17" bronze |
| 8 K. 458 "The Hunt"
1964 height 62" bronze
(half scale model for Philharmonic Hall, Lincoln Center, N.Y.C.) | 21 Aeolus
1971-1972 height 23" bronze |
| 9 Delphi
1967-1968 height 44 $\frac{1}{2}$ " bronze | 22 Scylla and Charybdis
1971-1972 length 24" bronze |
| 10 Ithaca
1965-1967 height 20" bronze | 23 Pillars of Hercules
1971-1972 height 21" bronze |
| 11 Daedelus
1970-1971 height 13" bronze | |
| 12 Cleopatra's Needle
1971-1972 height 37" bronze | |
| 13 Basileus
1966-1971 height 8" bronze | |

A selection of small bronzes and silvers

Note: illustrated on front cover, Samurai I; on back cover, Castor I.







Architectural Commissions

Facing page: **Arcturus**, plaster model for the proposed 25 foot work to be installed at the Minneapolis Federal Reserve Bank Building, Minneapolis.

Architect:
Gunnar Birkerts Associates

Above: **Thermopylae**, 16 foot bronze at the John F. Kennedy Federal Office Building, Government Center, Boston.

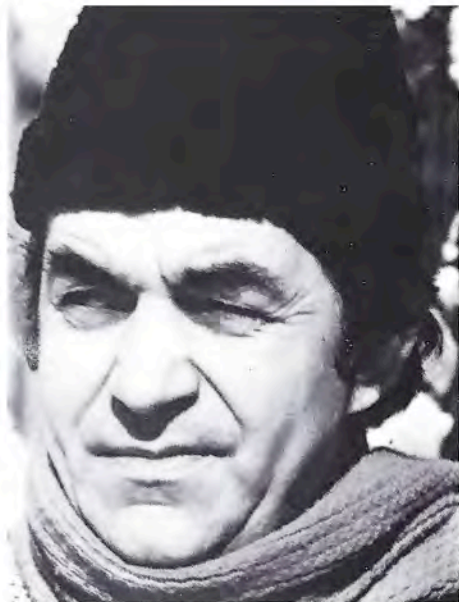
Architect:
Walter Gropius and Samuel Glaser

Left: **K. 458 «The Hunt»**, 10½ foot bronze at the Philharmonic Hall, Lincoln Center, New York City.

Architect:
Max Abramovitz



Dimitri Hadzi



Born March 21, 1921, New York City

Education

Cooper Union, New York City
Brooklyn Museum, New York City
Polytechnion, Athens, Greece
Museo Artistico Industriale, Rome, Italy

Grants and Awards

Fulbright Grant to Greece, 1950-1951
Louis Comfort Tiffany Award, 1955
John Simon Guggenheim Foundation, 1957
National Academy of Arts and Letters Grant, 1962
Artist-in-Residence, Dartmouth College, 1969

Commissions

Massachusetts Institute of Technology, Cambridge
Reynolds Metal Company, Memorial Award
Philharmonic Hall, Lincoln Center, New York City
Sun Life Insurance Company, Charles Center, Baltimore
J.F. Kennedy Federal Office Building, Boston
Centaur Fountain, Princeton University
Federal Reserve Bank, Minneapolis

One Man Shows

Galleria Schneider, Rome, 1958, 1960
Helene C. Seiferheld Gallery, New York City, 1959
Galerie Van de Loo, Munich, 1961
Stephen Radich Gallery, New York City, 1961-1962
Galerie Hella Nebelung, Dusseldorf, 1962
Massachusetts Institute of Technology, Cambridge, 1963
Temple Abroad, Tyler School of Art, Rome, 1968-1969
Felix Landau Gallery, Los Angeles, 1969
Hopkins Center, Dartmouth College, Hanover, 1969
Alpha Gallery, Boston, 1971

Selected Collections

Albright-Knox Gallery of Fine Arts, Buffalo
Chase Manhattan Bank, New York, City; Rome
Solomon R. Guggenheim Museum, New York City
Museum of Modern Art, New York City
New School for Social Research, New York City
Princeton University, Princeton
Rhode Island School of Design, Providence
Whitney Museum, New York City
Yale University, New Haven
Los Angeles Times, Los Angeles
Fogg Museum, Harvard University, Cambridge
Montreal Museum of Art, Montreal
Darmouth College, Hanover

Selected Group Shows

- New Talent IX, Museum of Modern Art, 1956
International Outdoor Sculpture Exhibition,
Middleheim Park, Antwerp, 1957, 1959, 1971
International Outdoor Sculpture Exhibition,
Sonsbeek Park, Arnhem, 1958
Carnegie International, Pittsburgh, 1958, 1961, 1967
Memorial Competition, Auschwitz, 1958
Recent Sculpture U.S.A., Museum of Modern Art,
New York City, 1959
Whitney Museum Annual, N.Y.C., 1960, 1961, 1963
Seattle World's Fair, 1962
2 Sculptors, 2 Painters, American Pavilion,
Venice Biennale XXXI, 1962
Battersea Park Outdoor Exhibition, London, 1963
White House Arts Festival, Washington, D.C. 1965
Modern Sculpture U.S.A., Rodin Museum, Paris,
Berlin, Baden-Baden, 1965-1966
Rosenthal Relief Reihe, Major European Cities
12 Former American Academy Artists, American Academy,
Rome, 1970
Salute to Rome, Galleria Nazionale d'Arte Moderne,
Rome, 1970

Bibliography

- American Sculpture, Dore Ashton
Modern Sculpture from the J.H. Hirshhorn Collection,
The Solomon R. Guggenheim Museum, New York 1962
Dizionario della Scultura Moderna, C. Carandente,
Il Saggiatore 1967
Dictionary of Contemporary American Artists,
Paul Cummings, St. Martin's Press 1966
Art in Architecture, Redstone, A.I.A.
Arte dopo il 1945 U.S.A., Marisa Volpi,
Cappelli Editore 1969

